



浪琴山

The Longines Hill

中国 湖南 长沙

京武集团

Changsha, Hunan, China

Jingwu Group

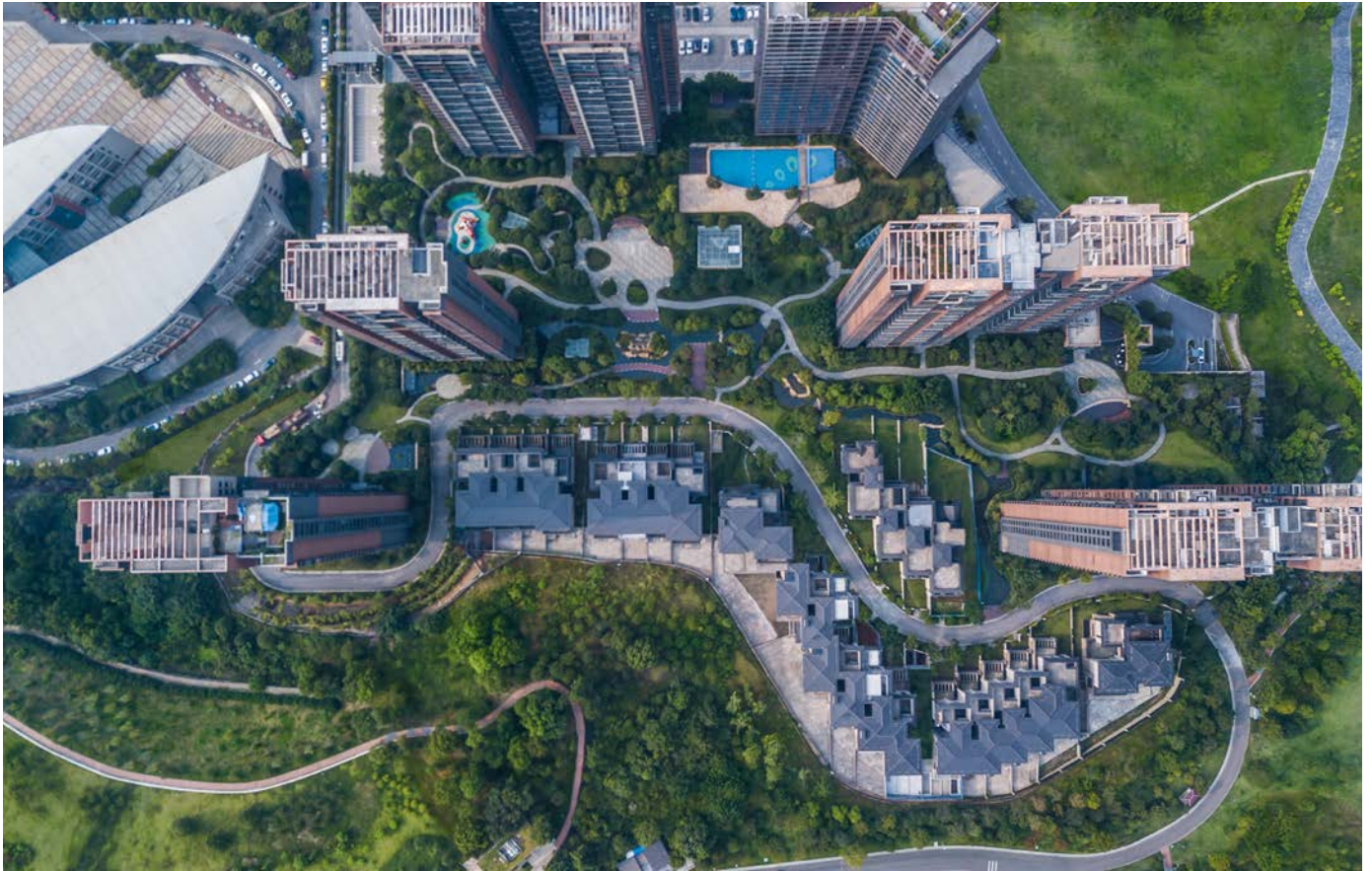
浪琴山综合开发位于地铁延伸段新开发地区,其包含多种业态,也是该区域高标准作品的代表。

普利斯设计集团与客户紧密合作,在项目中体现了多样化的区域特征,化陡峭的地形不利为项目优势,解决了工程技术上的难题,为住户打造出大面积的景观空间。购物中心前的两个临街广场连接起地铁站和相邻的公园。

The mix use development is a clear leader setting high standards across the varied range of developed components.

Working closely with the client Place Design Group developed the various precincts to have distinctive character and identities. Working with the steep topography Place Design Group developed a design style that maximised the recreational opportunities for residents and minimised construction issues. Also containing a district level shopping mall that addressed two street frontages, Place Design Group created a series of plazas that connect this retail area to the Metro station and an adjoining parkland.





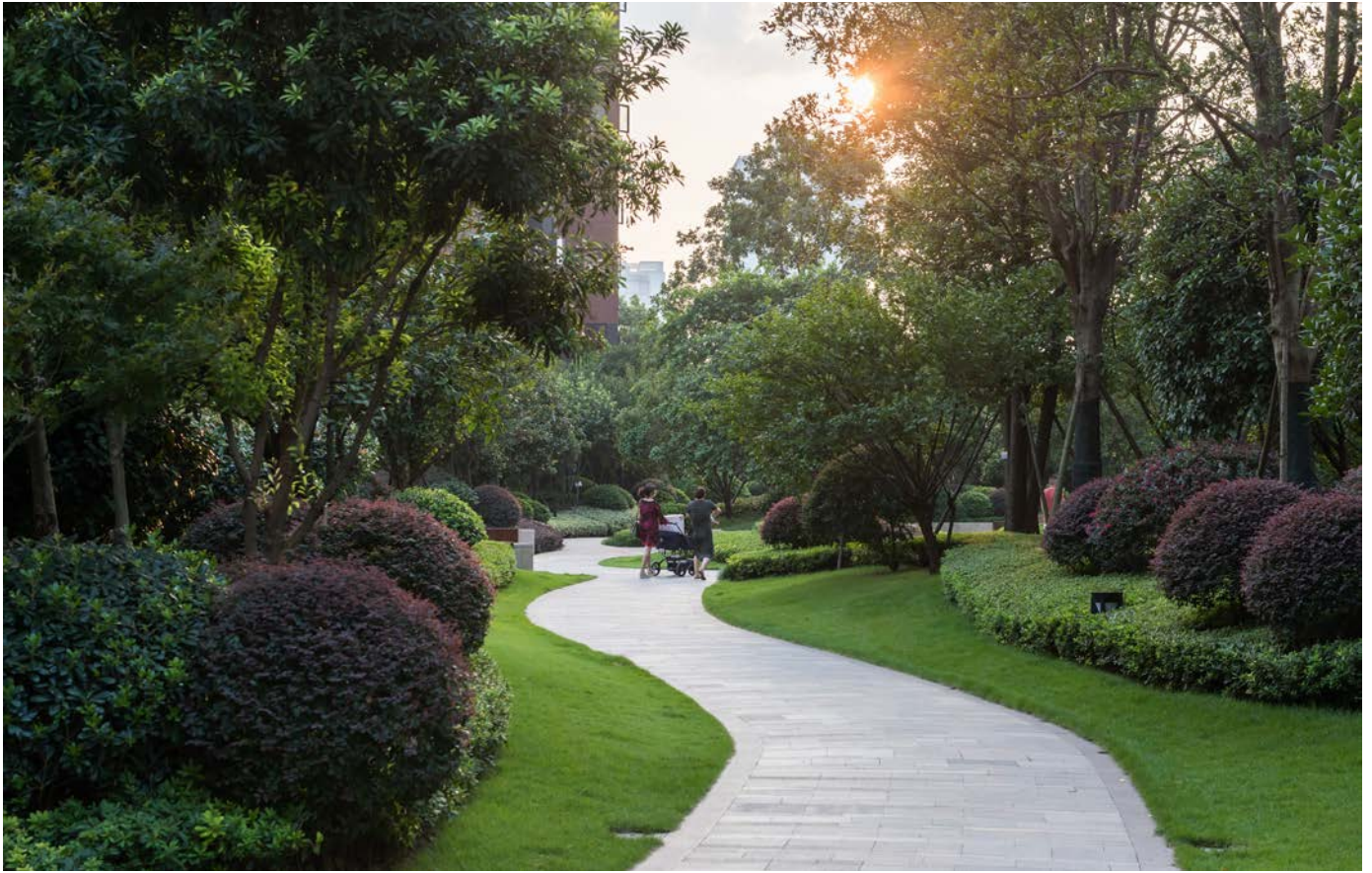
PEOPLE FOCUSED **FUTURE DRIVEN**. 聚焦人本 预见未来。

上海 Shanghai +86 21 3252 1155
 深圳 Shenzhen +86 755 8257 7816
 成都 Chengdu +86 28 8521 8510

布里斯班 Brisbane +61 7 3852 3922
 黄金海岸 Gold Coast +61 7 5591 1229
 悉尼 Sydney +61 2 9290 3300
 阳光海岸 Sunshine Coast +61 7 5499 6188
 汤斯维尔 Townsville +61 7 4725 7843



**place
design
group.**



PEOPLE FOCUSED **FUTURE DRIVEN**. 聚焦人本 预见未来。

上海 Shanghai +86 21 3252 1155
 深圳 Shenzhen +86 755 8257 7816
 成都 Chengdu +86 28 8521 8510

布里斯班 Brisbane +61 7 3852 3922
 黄金海岸 Gold Coast +61 7 5591 1229
 悉尼 Sydney +61 2 9290 3300
 阳光海岸 Sunshine Coast +61 7 5499 6188
 汤斯维尔 Townsville +61 7 4725 7843



**place
 design
 group.**