



All Images courtesy of Jason Smith Photography

Birtinya Retail Centre

澳大利亚 昆士兰州 阳光海岸
Sunshine Coast, QLD, Australia
Stockland

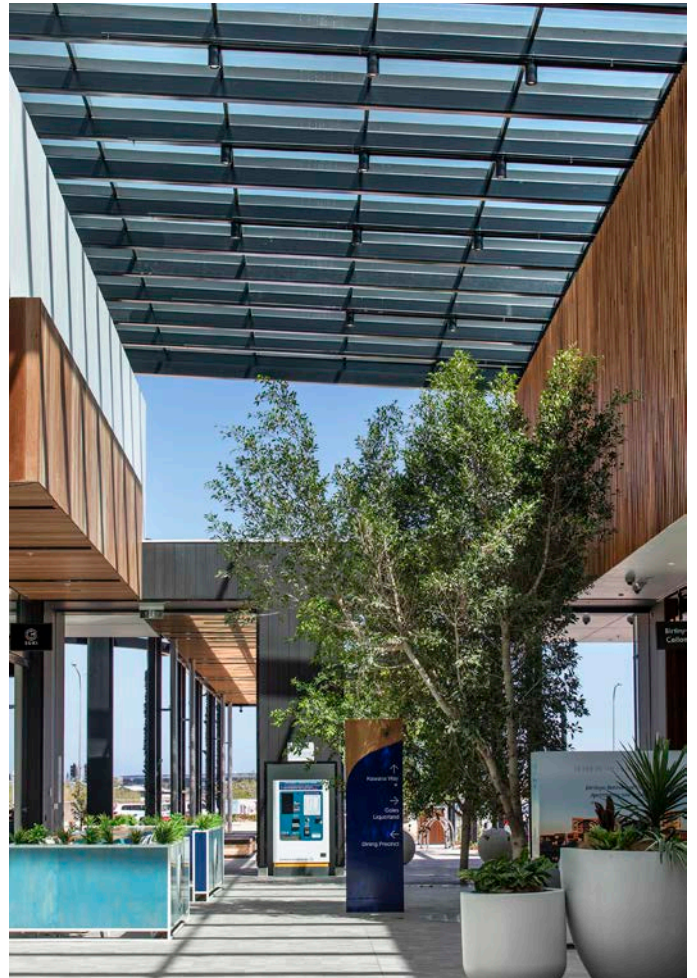
在商业零售环境中打造一个自然的公共区域，在一个熙熙攘攘、充满活力的社区购物中心中提供轻松的氛围。

Birtinya Retail Centre位于西部的大千层树森林旁，北部是大型零售中心，毗邻未来的商业建筑。普利斯设计集团受委托为项目的内部和外部景观提供设计服务。设计纲要要求体现独特的阳光海岸的特点，同时结合繁茂和活力的沿海室内种植和质朴的花盆组合。项目的关键是大型无花果树的种植，它从外面的广场一直延伸到入口商场。笔直的视线和强化的轴线带来强大的方向性，以及自然斑驳的光线。我们与Buchan Architects协调室外广场的设计，确保屋顶的结构和定制的座椅是互为协调的。

A natural public realm setting in a retail environment that provides the feeling of relaxation amongst the hustle and bustle of an energetic and vibrant community shopping centre.

The Birtinya Retail Centre is located beside a large Melaleuca Forest to the west, and large format retailing to the north, positioned adjacent to future commercial buildings Place Design Group were commissioned to provide Landscape Architectural services for both internal and external landscape designs. The design brief involved creating a distinctly Sunshine Coast character while incorporating the lushness and vibrancy of coastal indoor planting palettes and rustic pot selections. Key to the project is the large fig tree plantings which run from the outside plazas directly into the entry malls. The direct line of sight and axis reinforcement is a strong directional outcome while providing naturally dappled light. The outdoor plazas were coordinated with Buchan Architects to ensure the roofing structures and bespoke seating were complementary.





PEOPLE FOCUSED **FUTURE DRIVEN.** 聚焦人本 预见未来。

上海 Shanghai +86 21 3252 1155
 深圳 Shenzhen +86 755 8257 7816
 成都 Chengdu +86 28 8521 8510

布里斯班 Brisbane +61 7 3852 3922
 黄金海岸 Gold Coast +61 7 5591 1229
 悉尼 Sydney +61 2 9290 3300
 阳光海岸 Sunshine Coast +61 7 5499 6188
 汤斯维尔 Townsville +61 7 4725 7843



place
 design
 group.